



THE VILLAGES

Community starts here.



THE VILLAGES

Community starts here.

*Experience the feeling of living in a real community at The Villages,
the most exciting new development to be built in Chattanooga in decades.*

The Villages is the cornerstone of a multi-faceted, multi-phased revitalization plan for the Alton Park neighborhood that will include both rental and for-sale housing. The multi-phased development also proposes commercial office and retail space, and a recreation component, including a golf course.

The Villages is the most convenient new neighborhood around. Just minutes from downtown Chattanooga, and with easy access to eight major arteries including I-24, Ochs Highway, Cummings Highway, and the Carter Bus Line, our location affords residents convenient and direct access to any of the numerous nearby shopping and dining choices. Biking, walking and outdoor activities can be enjoyed along the nearby Safewalk, one of Chattanooga's wonderful greenways, which connects to Lookout Mountain's historic trails, and to scenic overlooks of the city and the river.

The Villages is a new development of 275 rental flats, townhomes and duplexes. Each residence includes a front porch, patio, rear yard, and exterior storage. The spacious one-to-four bedroom homes are equipped with washer-dryer hookups, tile bathrooms, and central air conditioning. Depending on the floor plan, some homes have eat-in kitchens.

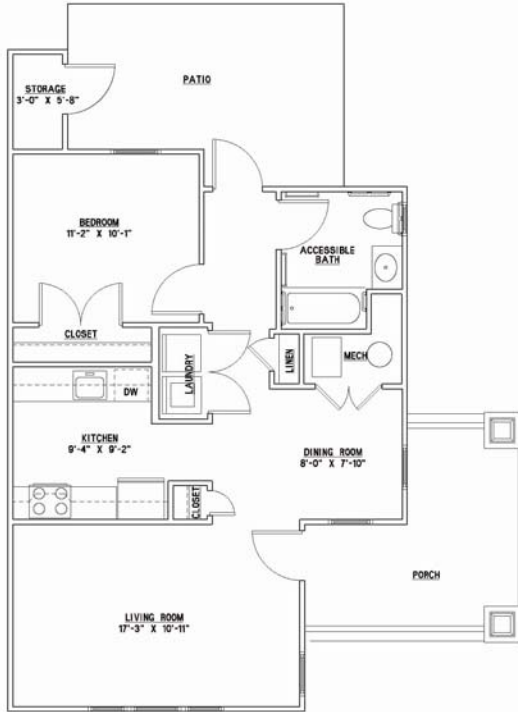
New street patterns create a village atmosphere, and will afford residents a connection to the existing residential streets surrounding their neighborhood. The leasing center is located in the beautiful new Community Clubhouse, adjacent to the swimming pool at The Villages.

Be the first to experience the best in community living. Come live at The Villages.

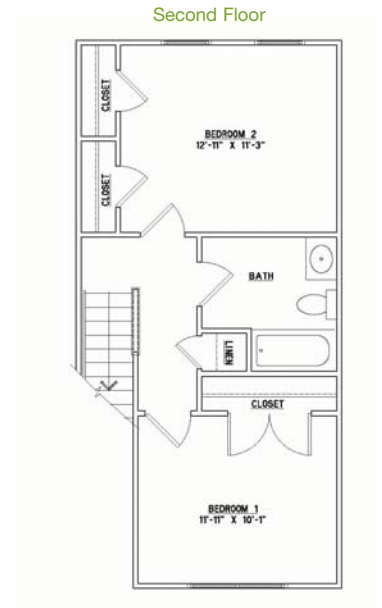
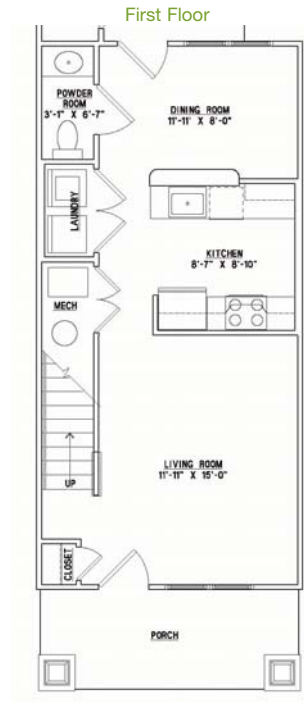
For rental and sales information, please call

423-634-1120

DEVELOPED BY
Pennrose Properties, Inc.



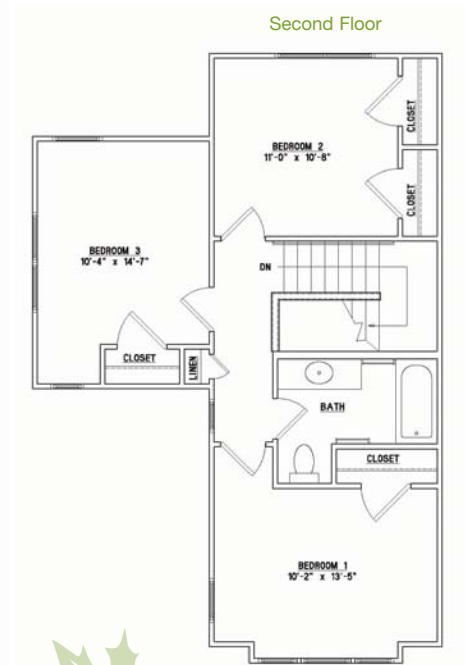
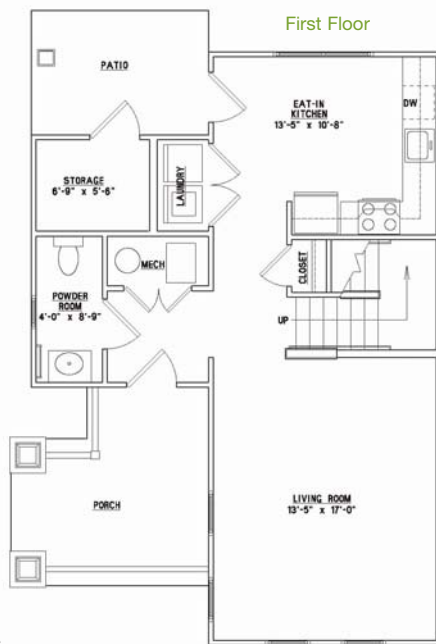
The Oak
1 BEDROOM
1 BATH
 770 Square Feet



The Sycamore
2 BEDROOM
1.5 BATH
 1018 Square Feet

FEATURES:

- Beautifully appointed 1, 2, 3 & 4 bedroom flats, duplexes and townhomes
- Designer kitchen package
- Berber carpeting
- Porches/Patios
- Washer/dryer connection
- Generous closet space
- Central air conditioning
- Intrusion alarms
- High speed internet
- Outside storage
- Private driveway
- Luxurious clubhouse with pool
- Magnificent views to Lookout Mountain
- Conveniently located on the CARTA bus line
- And so much more!



The Maple
3 BEDROOM
1.5 BATH
 1274 Square Feet



297 West 38th Street
 Chattanooga Tennessee 37410
 T: 423-634-1120 F: 423-634-1121
 TTY/TDD: 800-545-1833 ext 648

DIRECTIONS

From Downtown: Take Market Street / Alton Park Boulevard to 38th Street. Turn left on 38th Street. Go five blocks. The Leasing Center is on your left, just before Central Avenue.

From the East: Take I-24 West to the second Market Street exit. Stay on Market Street / Alton Park Boulevard to 38th Street. Turn left on 38th Street. Go five blocks. The Leasing Center is on your left, just before Central Avenue.

From the West: Take I-24 East to the Broad Street / Lookout Mountain exit. Go down Broad Street to 33rd Street and turn left. Take 33rd Street to the light at Alton Park Boulevard and turn right. Turn left at 38th Street and go five blocks. The Leasing Center is on your left, just before Central Avenue.

PROFESSIONALLY MANAGED BY PENNROSE MANAGEMENT COMPANY

Recognized leaders in management of residential communities, Pennrose Management Company knows that service can make the essential difference in the lives of our residents.

